

# LOADMASTER ENTERPRISE

---

Setup, installation and  
updating - October 2018

ZIPZAP Computers Limited

Lincoln  
LN2 4WJ

Phone 01158-882830  
Email [support@zipzap.eu](mailto:support@zipzap.eu)



# Loadmaster Enterprise

## Initial installation

Go to [www.zipzap.eu](http://www.zipzap.eu) in your internet browser and on the first page click on the blue 'All Downloads Here' button.

Logistics software specialists to big, medium or small companies.  
National and International.  
"Multum in parvo"

Be the first to **review us on**  TRUSTPILOT

ALL DOWNLOADS  
HERE

REMOTE SUPPORT  
HERE

NEWS OF WORK IN  
PROGRESS

ALL URGENT NEWS  
HERE

TPN INVOICING &  
SOAP COVER

REQUEST HELP  
QUICK

LOADMASTER LINK  
HERE

BULLETIN BOARD  
HERE

SAMEDAY EXP LINK  
HERE

This will open a further window. Where you should double-click on the word 'Shop'

[\[Return to main page\]](#)

## **ZipZAP Computers Limited - Available downloads**

**Files in <http://www.zipzap.eu/downloads>:**

- [Eclipse](#) 4KB
- [EntFreight](#) 4KB
- [TpnIreland](#) 4KB
- [README.txt](#) 534B
- [ESCRO](#) 4KB
- [Halcion](#) 4KB
- [Nightfreight](#) 4KB
- [JMA](#) 4KB
- [Citipost](#) 4KB
- [Techlogico](#) 4KB
- [MandG](#) 4KB
- [WingsTransport](#) 4KB
- [Xpression](#) 4KB
- [Penstream](#) 4KB
- [YorkshireFreight](#) 4KB
- [Support](#) 4KB
- [Mitchells](#) 4KB
- [FreeSoftware](#) 4KB
- [TntRetail](#) 4KB
- [Utilities](#) 4KB
- [UPS](#) 4KB
- [TpnTest](#) 4KB
- [MCM](#) 4KB
- [Android](#) 4KB
- [Logic](#) 4KB
- [Translink](#) 4KB
- [Shop](#) 4KB
- [TpnUK](#) 4KB
- [HelpSheets](#) 4KB
- [YPO](#) 4KB



This will open a further window where you should double-click on the words 'Loadmaster Enterprise'.

[\[Return to main page\]](#)

## ZIPZAP Computers Limited - Available downloads

Files in <http://www.zipzap.eu/downloads/Shop>:

- [Multilab](#) 4KB
- [LogisticsManager](#) 4KB
- [Hazchem](#) 4KB
- [Docutrak](#) 4KB
- [Mailman](#) 4KB
- [Warehouse](#) 4KB
- [SamedayExpress](#) 4KB
- [Terms and Conditions on the sale of goods and services.pdf](#) 206KB
- [CnMbookWindowsCE](#) 4KB
- [Malwarebytes](#) 4KB
- [DynamicTpnImport](#) 4KB
- [Citipost](#) 4KB
- [WindowsCE](#) 4KB
- [LoadmasterExtreme](#) 4KB
- [PatTest](#) 4KB
- [UkMail](#) 4KB
- [Microhub](#) 4KB
- [PLATO](#) 4KB
- [Labprint](#) 4KB
- [ParcelCustomerSystem](#) 4KB
- [LoadmasterEnterprise](#) 4KB
- [Comodo](#) 4KB
- [ParcelTrak](#) 4KB
- [FuelDelivery](#) 4KB
- [RemoteImplant](#) 4KB
- [TpnAdvantage64](#) 4KB
- [TpnLink](#) 4KB
- [Spooly](#) 4KB
- [MobileSolutions](#) 4KB



This will open a further window where you should double-click on the word 'LoadMaster.EXE'

[\[Return to main page\]](#)

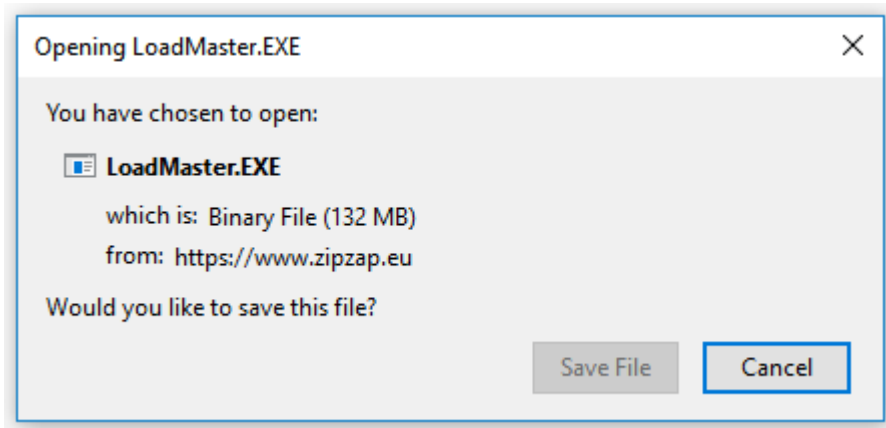
## ZIPZAP Computers Limited - Available downloads

**Files in <http://www.zipzap.eu/downloads/Shop/LoadmasterEnterprise>:**

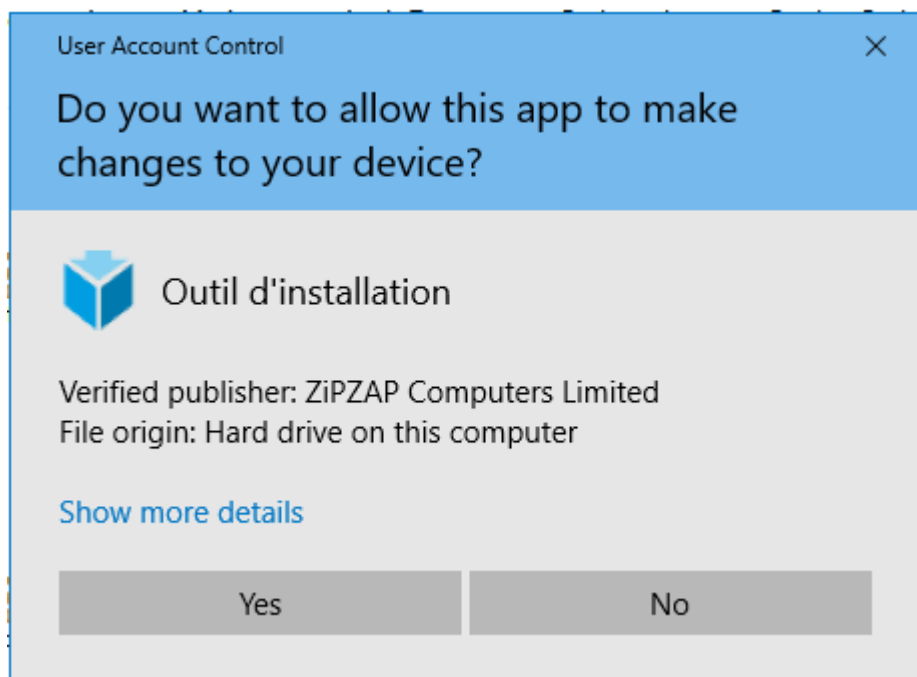
- [Demos](#) 4KB
- [version.txt](#) 9B
- [00294-16-5.BMP](#) 1KB
- [TpnUkPodViewer4Java.jar](#) 2MB
- [HelpVideos](#) 4KB
- [logo.jpg](#) 36KB
- [LoadMasterLeaflet.pdf](#) 537KB
- [Ver 44 0 1 12](#) 4KB
- [Manuals](#) 4KB
- [updates.txt](#) 18KB
- [Ver 44 0 1 10](#) 4KB
- [Ver 44 0 1 04](#) 4KB
- [Ver 44 0 1 15](#) 4KB
- [SAGE DATA IMPORT.pdf](#) 798KB
- [LoadMaster.EXE](#) 132MB
- [Ver 44 0 1 16](#) 4KB
- [Ver 44 0 1 14](#) 4KB
- [LoadmasterWriteUp.pdf](#) 197KB
- [readme.txt](#) 923B
- [Additions](#) 4KB
- [SupportFiles](#) 4KB
- [HelpSheets](#) 4KB
- [QuickLookAtLoadmaster.wmv](#) 136MB
- [TpnUkPodViewer.EXE](#) 47MB



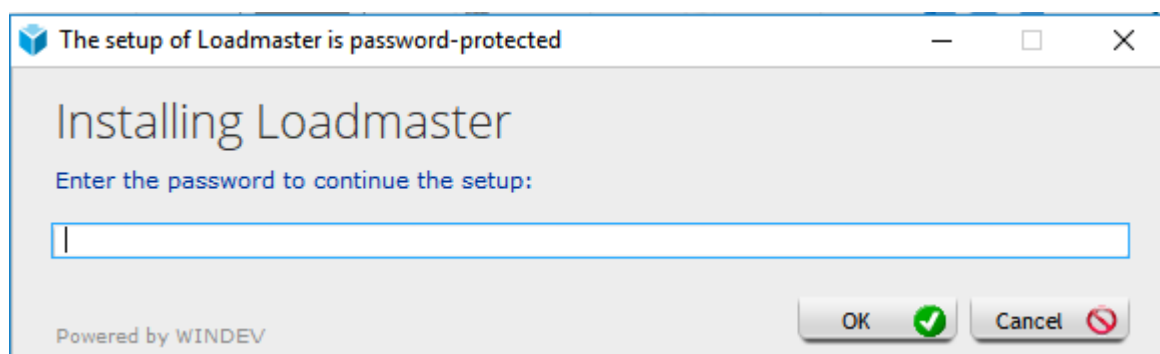
Depending on your browser you will get various options. Effectively you need to SAVE and then RUN this.



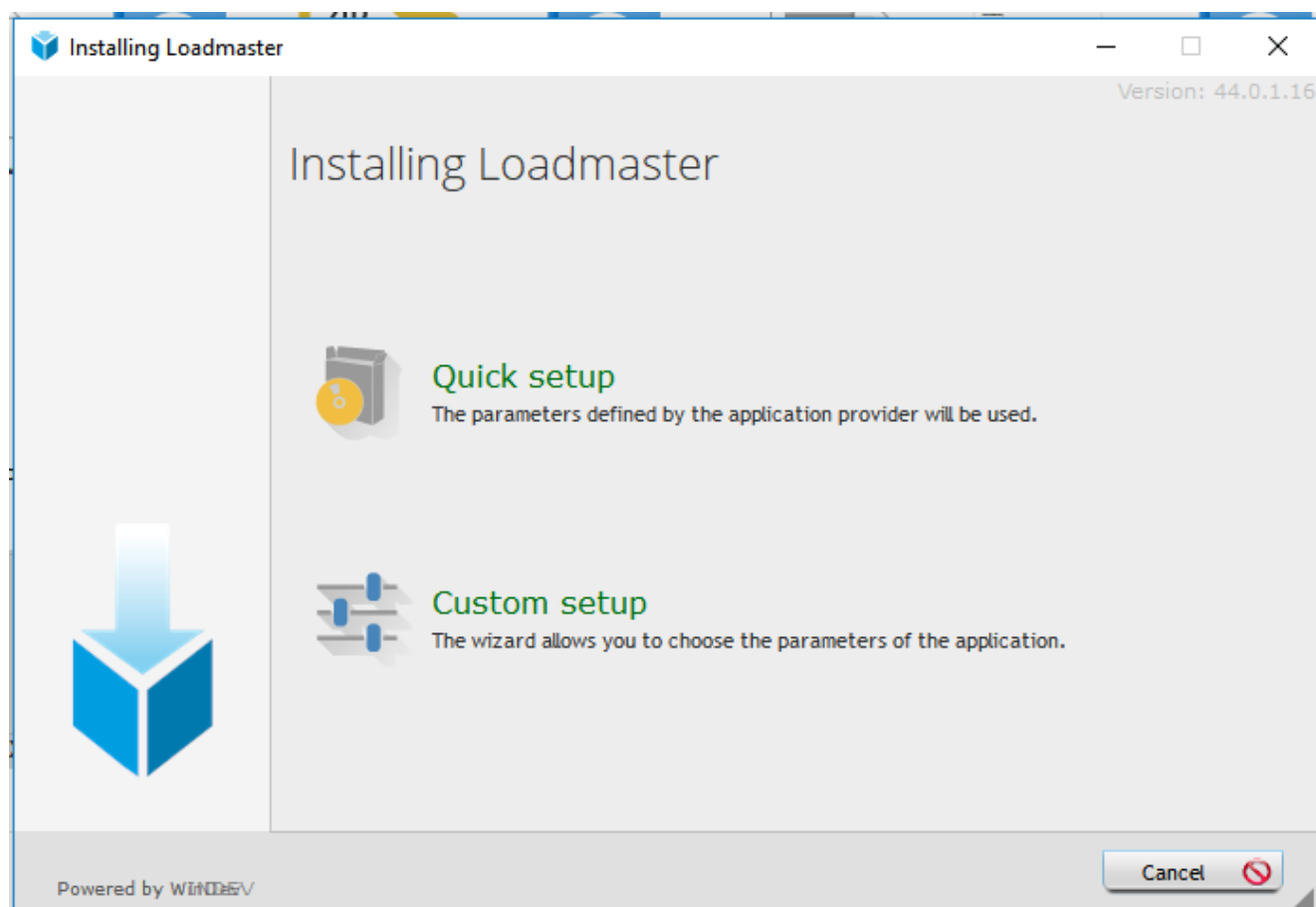
Next you will get this screen. It is asking for permission to load. Answer YES. Note it says 'Verified publisher'.



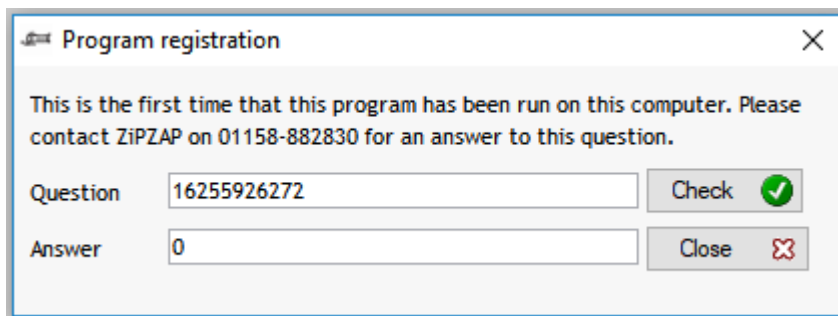
This will open a message box where you should enter the latest installation password and Ok.



This will open a further message box where you get two options. Choose Quick Setup for a first time install. This is the normal option. **Only use Custom if you are updating to a new program version, you have your data files elsewhere than on this computer, it is the first computer being updated and there are file structure changes. (see further details later).** Otherwise use Quick Setup.

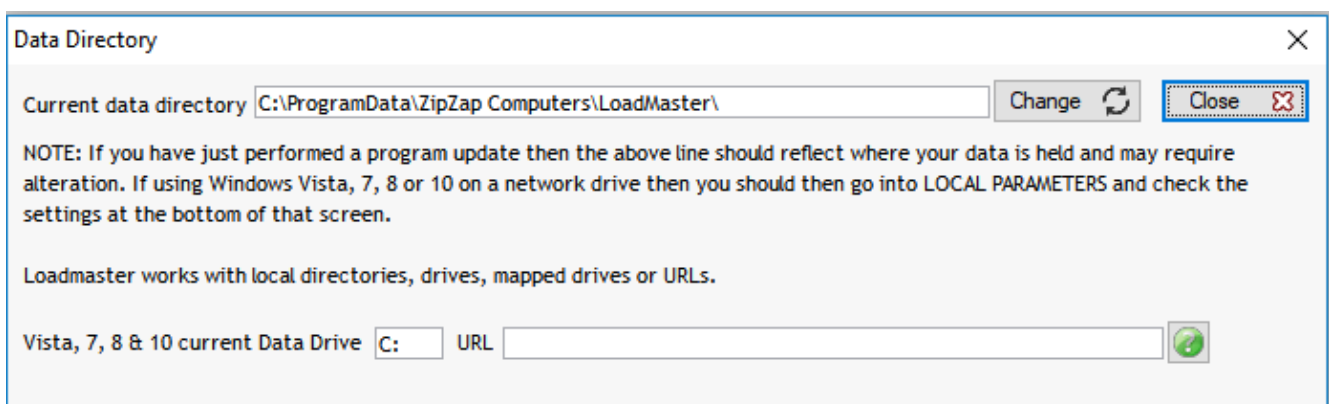


If this is a new install then you will get a message box asking for the answer to a numerical question. Ring us or email for this.



The installation continues. On a new installation you will be asked for the current data directory. Initially this will default to -

C:\ProgramData\ZipZap Computers\Loadmaster

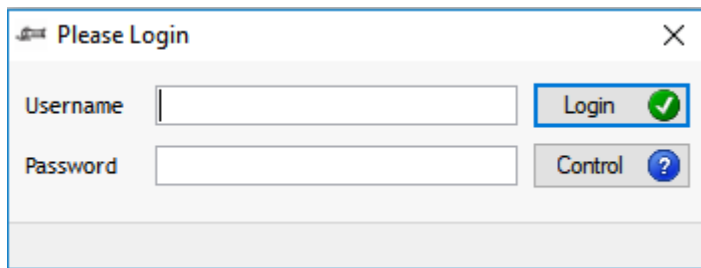


If you are adding a further computer and the data drive is accessible then you can choose it here.

Note that the ProgramData folder may be 'hidden' on your system by Windows and not visible in Explorer.



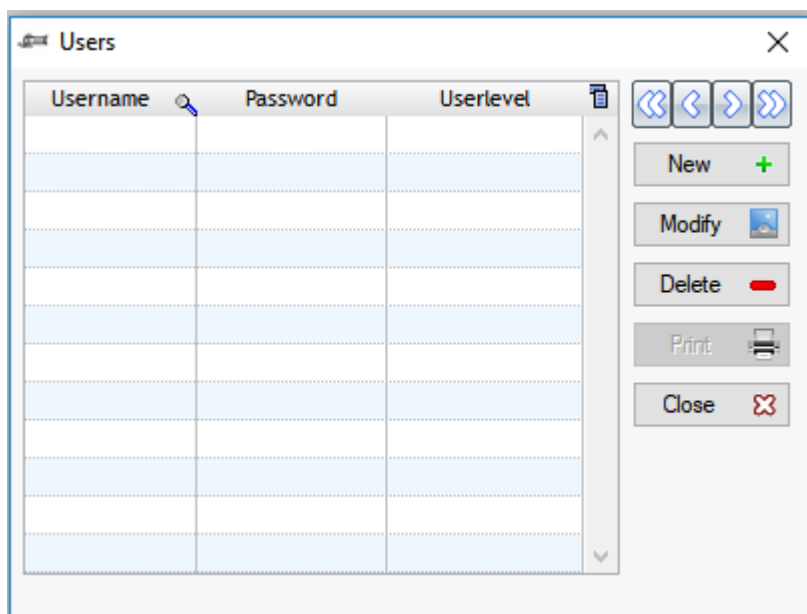
You will now be asked to Login.



A dialog box titled "Please Login" with a close button (X) in the top right corner. It contains two input fields: "Username" and "Password". To the right of the "Username" field is a "Login" button with a green checkmark icon. To the right of the "Password" field is a "Control" button with a blue question mark icon.

If you are adding a new computer to an existing system or just updating then **YOU HAVE FINISHED**. Log in as normal.

If this is the first installation then enter **MANAGER** as a user and **borg** as a password. You will get a user table.



A window titled "Users" with a close button (X) in the top right corner. It displays a table with three columns: "Username", "Password", and "Userlevel". The table is currently empty. To the right of the table is a vertical toolbar with several buttons: "New" with a green plus sign, "Modify" with a blue icon, "Delete" with a red minus sign, "Print" with a printer icon, and "Close" with a red X icon. Above the "New" button are four navigation arrows (left, left, right, right).

Click on New and create a user.

Initially it is recommended that you create an open system, restricting users later by altering their access. Click on the 'Tick all' button to allow full access.

To restrict access, simply remove ticks from options.

Create/Amend Users

Username: NORMAN  
Password: klingon  
 Logged in

Userlevel:  
 Superuser  
 Administrator  
 User  
 Basic User

<input checked="" type="checkbox"/> Accounts	<input checked="" type="checkbox"/> Pickups	<input checked="" type="checkbox"/> Runsheets	<input checked="" type="checkbox"/> Control panel
<input checked="" type="checkbox"/> Collectors	<input checked="" type="checkbox"/> Deliveries	<input checked="" type="checkbox"/> Incomplete jobs	<input checked="" type="checkbox"/> Exports
<input checked="" type="checkbox"/> Default prices	<input checked="" type="checkbox"/> Jobs	<input checked="" type="checkbox"/> Manifests	<input checked="" type="checkbox"/> Imports
<input checked="" type="checkbox"/> Gazetteer	<input checked="" type="checkbox"/> Implants	<input checked="" type="checkbox"/> Invoice print	<input checked="" type="checkbox"/> Transfer to archive
<input checked="" type="checkbox"/> Holidays	<input checked="" type="checkbox"/> Runs	<input checked="" type="checkbox"/> Statements	<input checked="" type="checkbox"/> Problem report
<input checked="" type="checkbox"/> Status codes	<input checked="" type="checkbox"/> Messages	<input checked="" type="checkbox"/> Set data directory	<input checked="" type="checkbox"/> Customer reports
<input checked="" type="checkbox"/> VAT codes	<input checked="" type="checkbox"/> Sales leads	<input checked="" type="checkbox"/> Backup Restore	<input checked="" type="checkbox"/> Emails
<input checked="" type="checkbox"/> Global parameters	<input checked="" type="checkbox"/> Invoicing	<input checked="" type="checkbox"/> Corrections	<input checked="" type="checkbox"/> Secure area
<input checked="" type="checkbox"/> Local parameters	<input checked="" type="checkbox"/> Deleted Jobs		

Allow into Financials tab     Allow to delete jobs

OK     Close

Tick all

Click on OK to save. Close the next table.

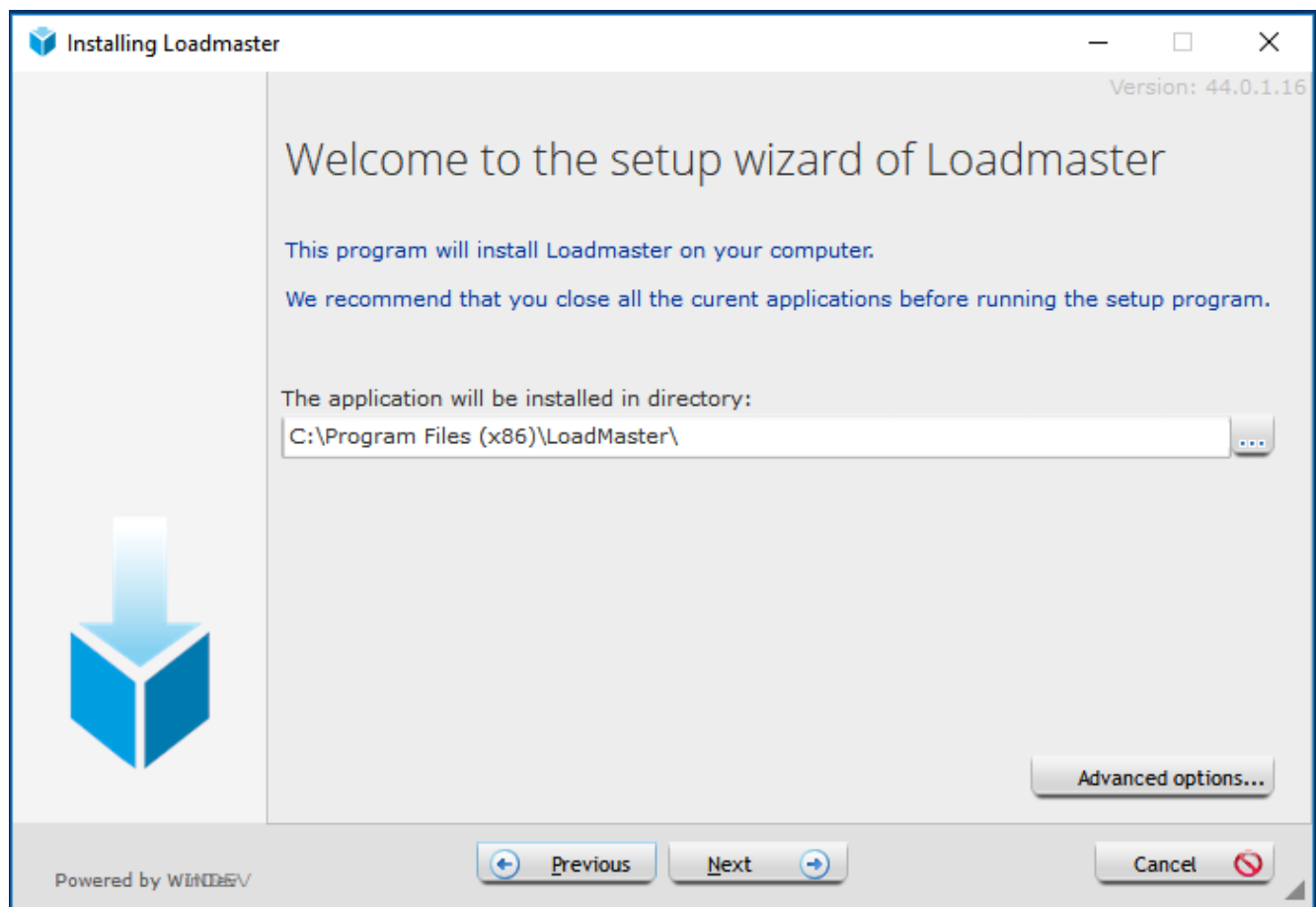
You can now log in.

## Custom installation

After choosing Custom you will get this screen where you should click on the 'Advanced options' button. This allows you to update any data file changes on directories that are not on this computer or in a non-standard location.

**Only use Custom if you are updating to a new program version, you have your data files elsewhere than on this computer, it is the first computer being updated and there are file structure changes.**

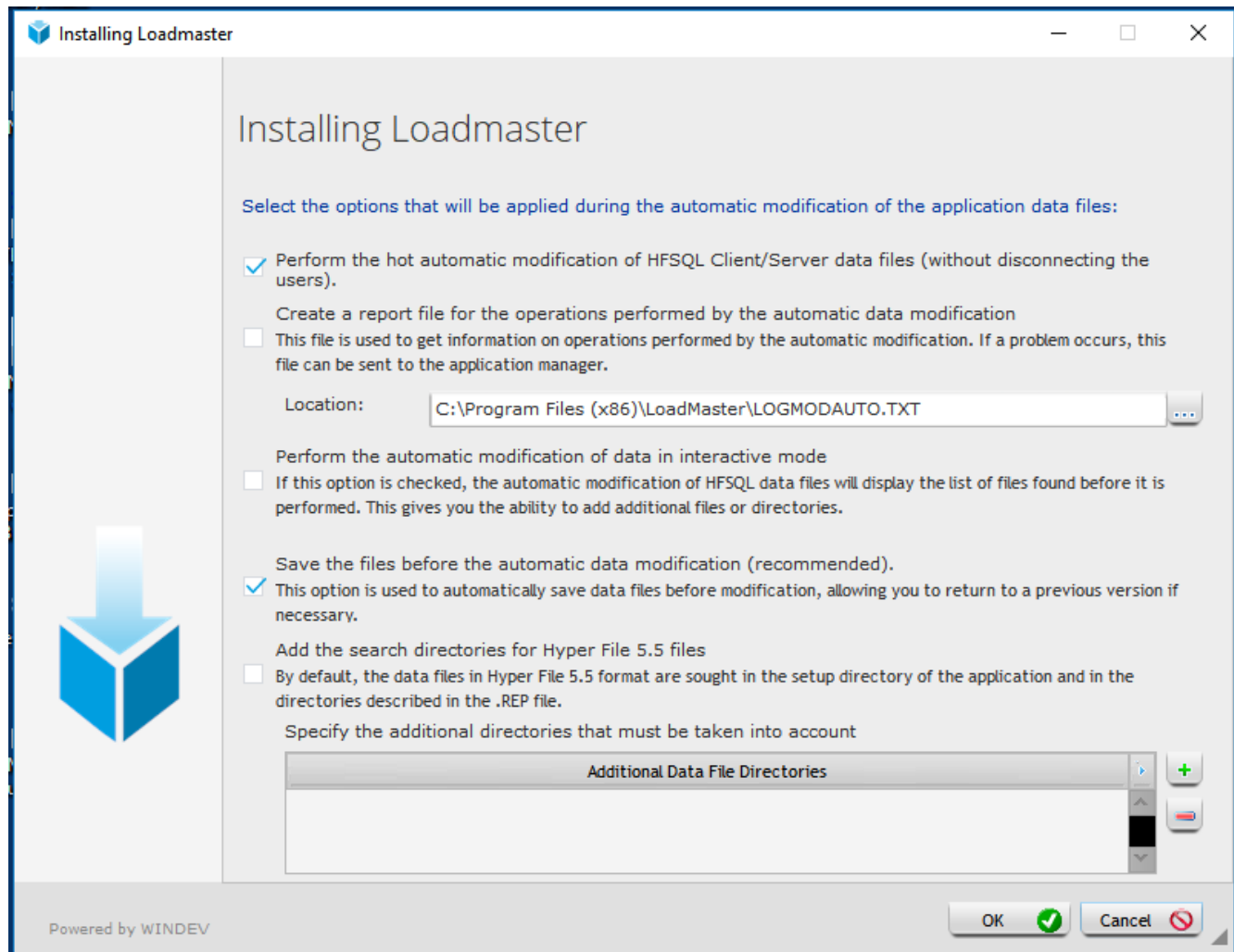
Get all users to log out before updating the first computer.



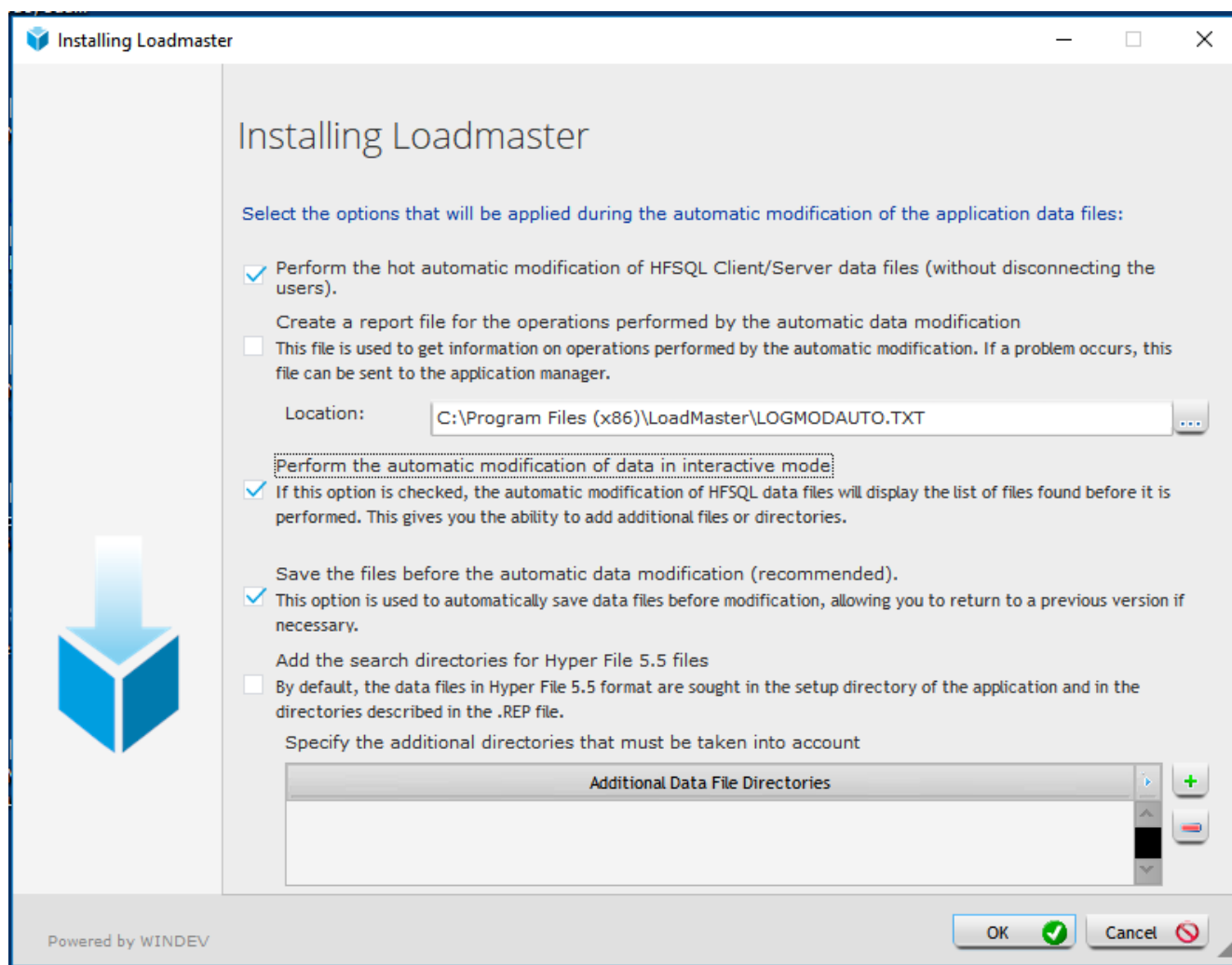
Leave the application directory alone but click on the [Advanced options] button.

You will get a new screen.

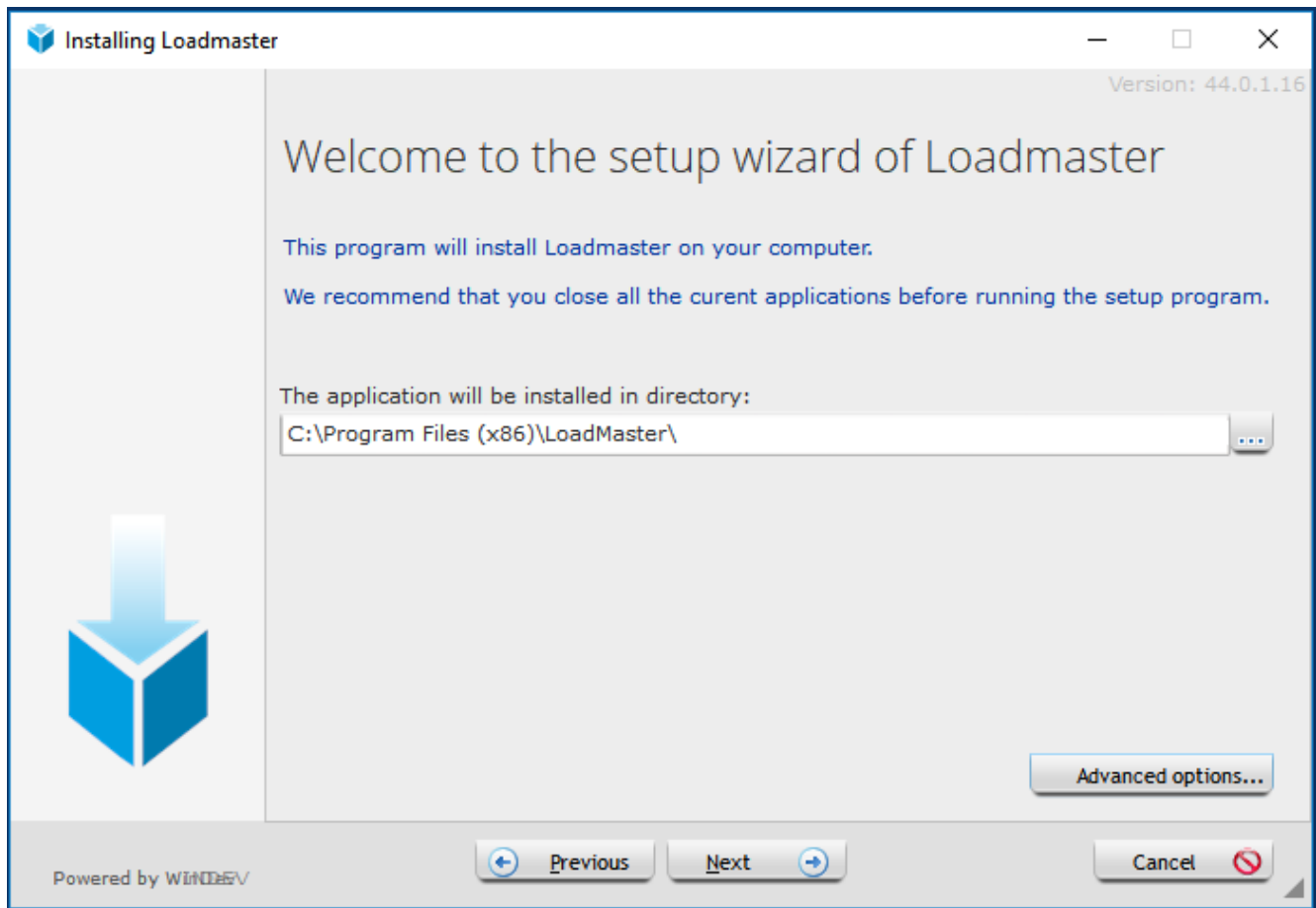
Note the option of 'perform the automatic modification of data in interactive mode'.



Tick this option and Ok.



It will continue the installation.



Initially it is recommended that you create an open system, restricting users later by altering their access. Click on the 'Tick all' button to allow full access.

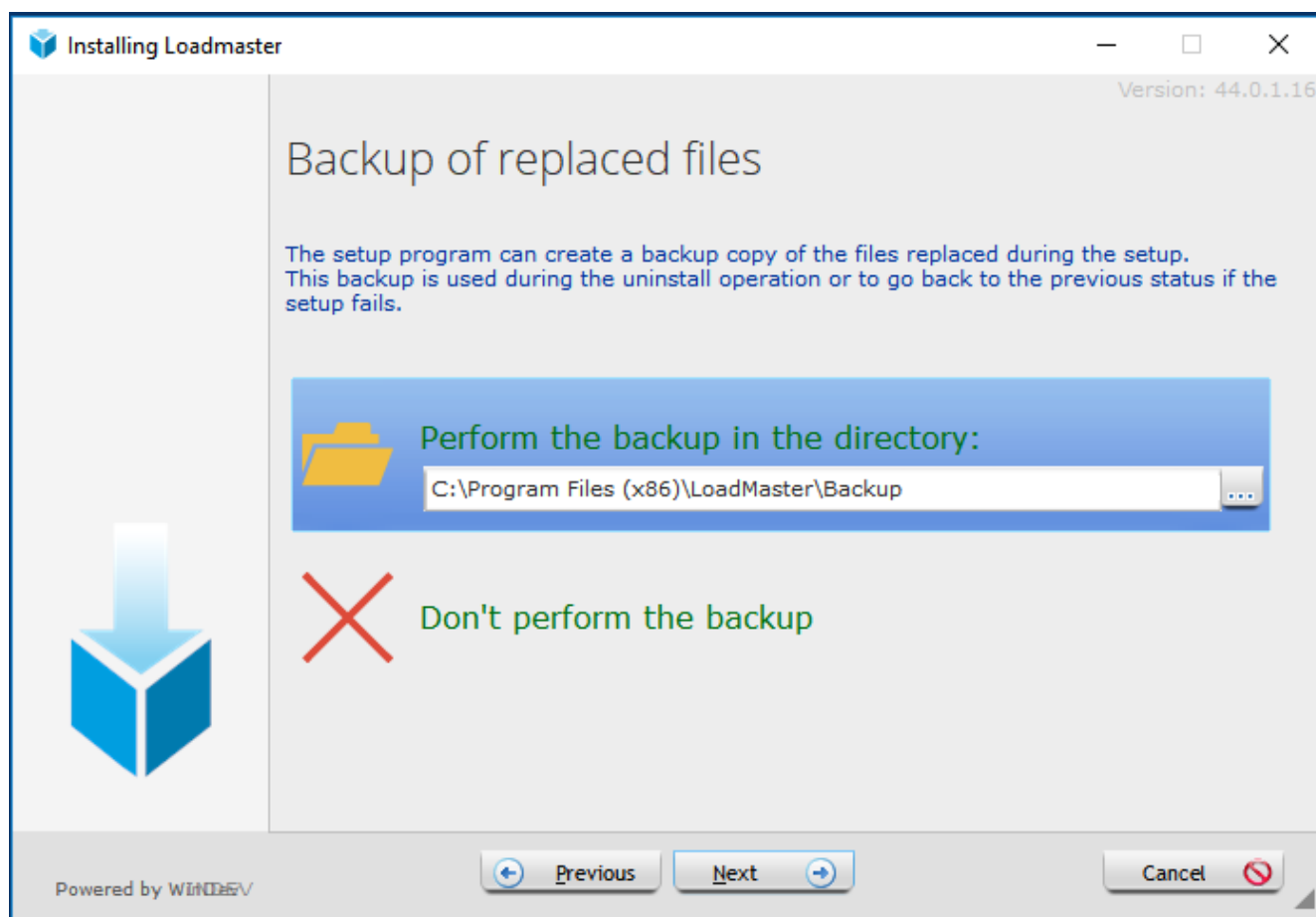
NOTE: The Loadmaster application should always be in

C:\Program Files (x86)\Loadmaster\ (If using a 64 bit operating system)

Or

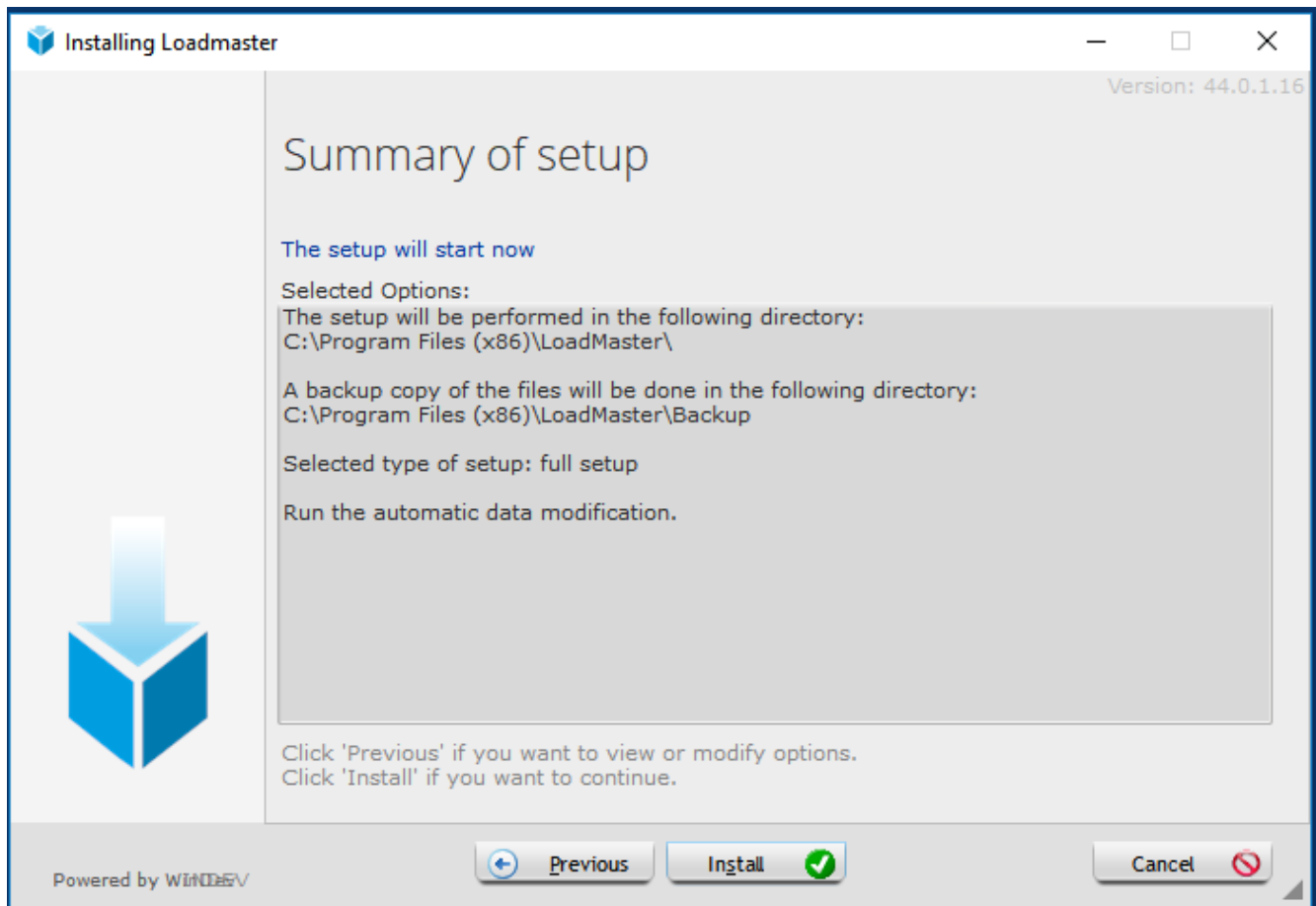
C:\Program Files\Loadmaster\ (If using a 32 bit operating system)

You will be asked if you optionally want to back up files replaced by the update. The normal answer is 'Don't perform the backup'.



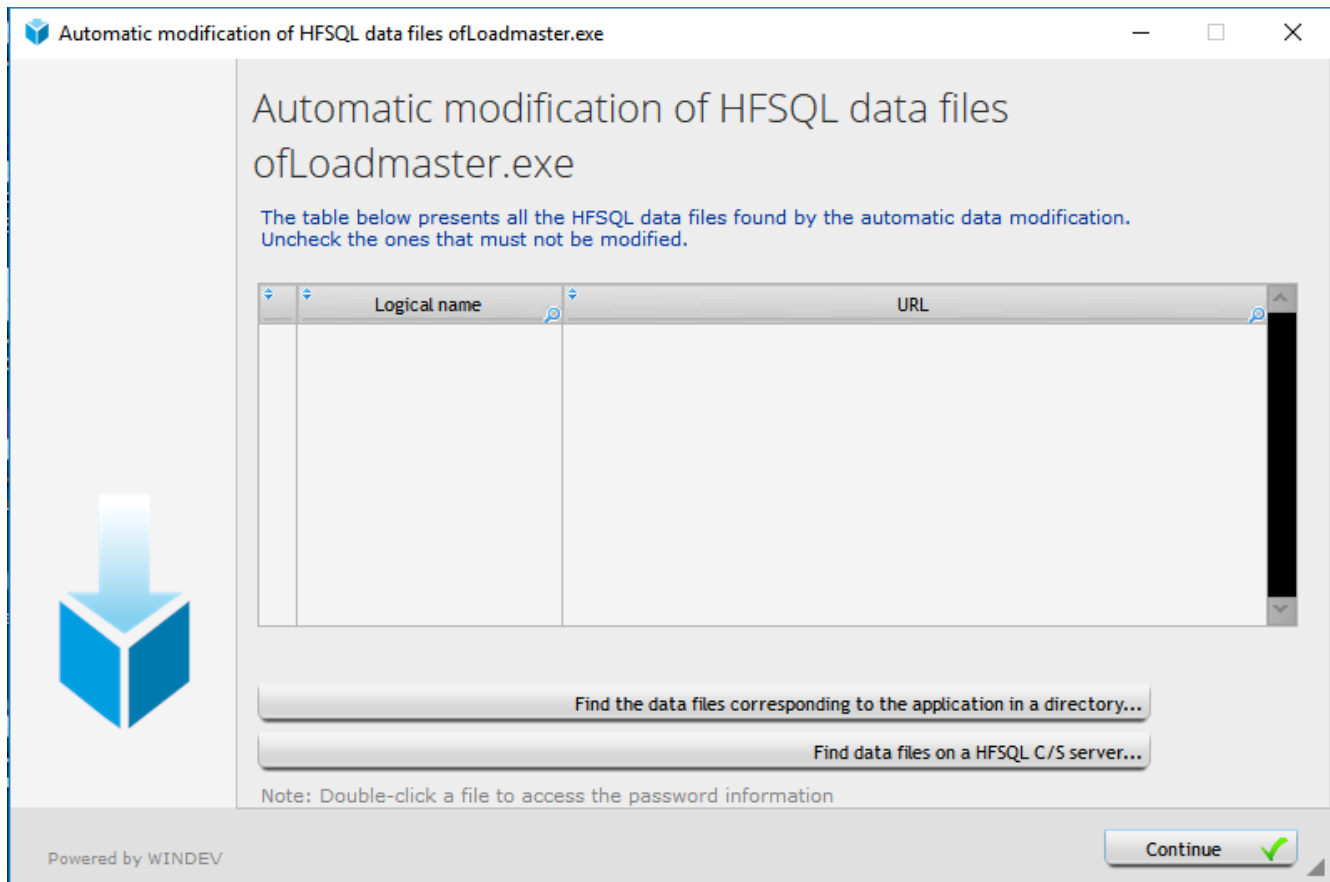
If you choose to Perform a backup then it will copy the existing system in its entirety into a Backup folder under the program directory.

It will then confirm the proposed actions. Click on the Install button.





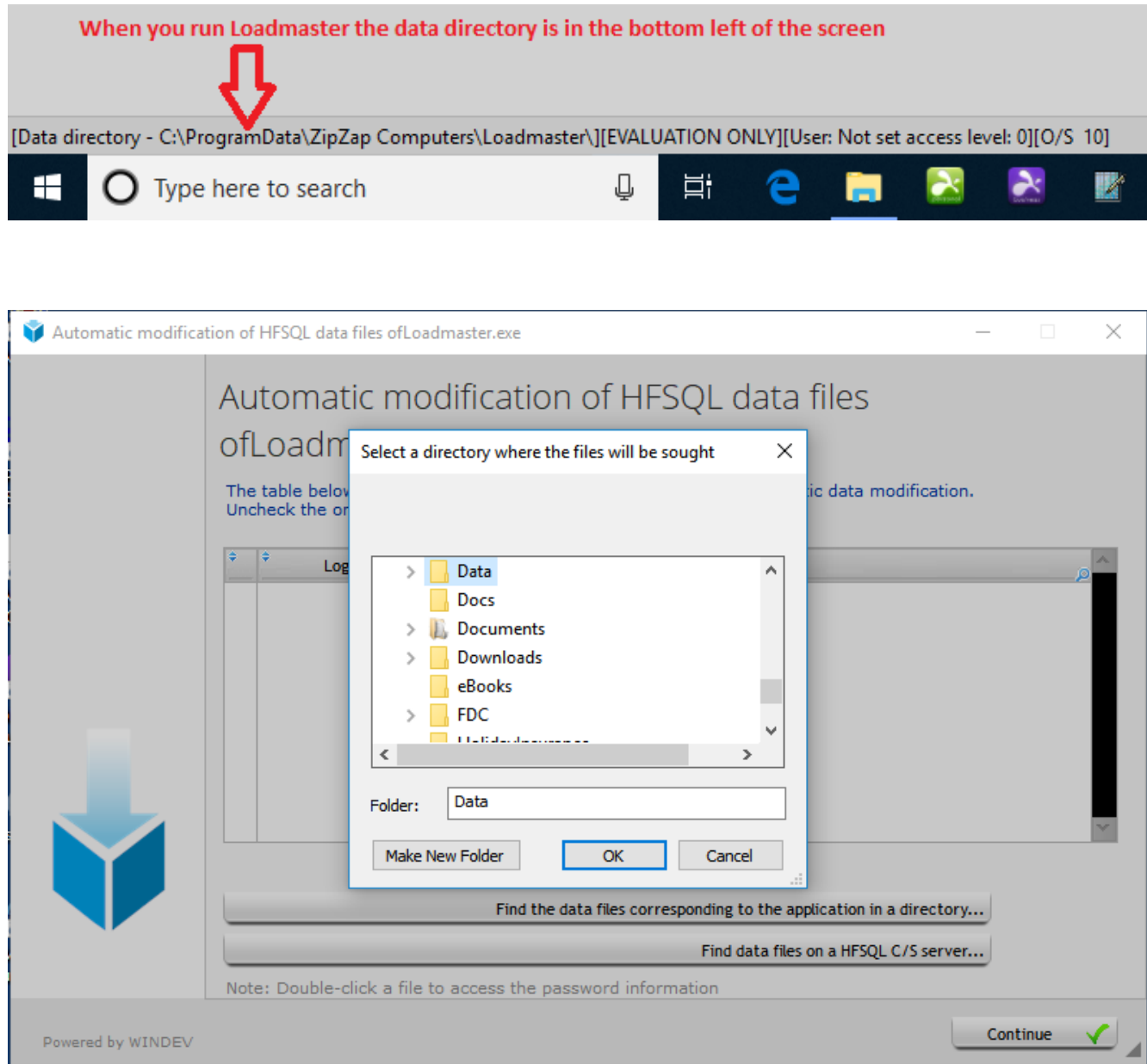
You will then be asked for other directories that contain data.



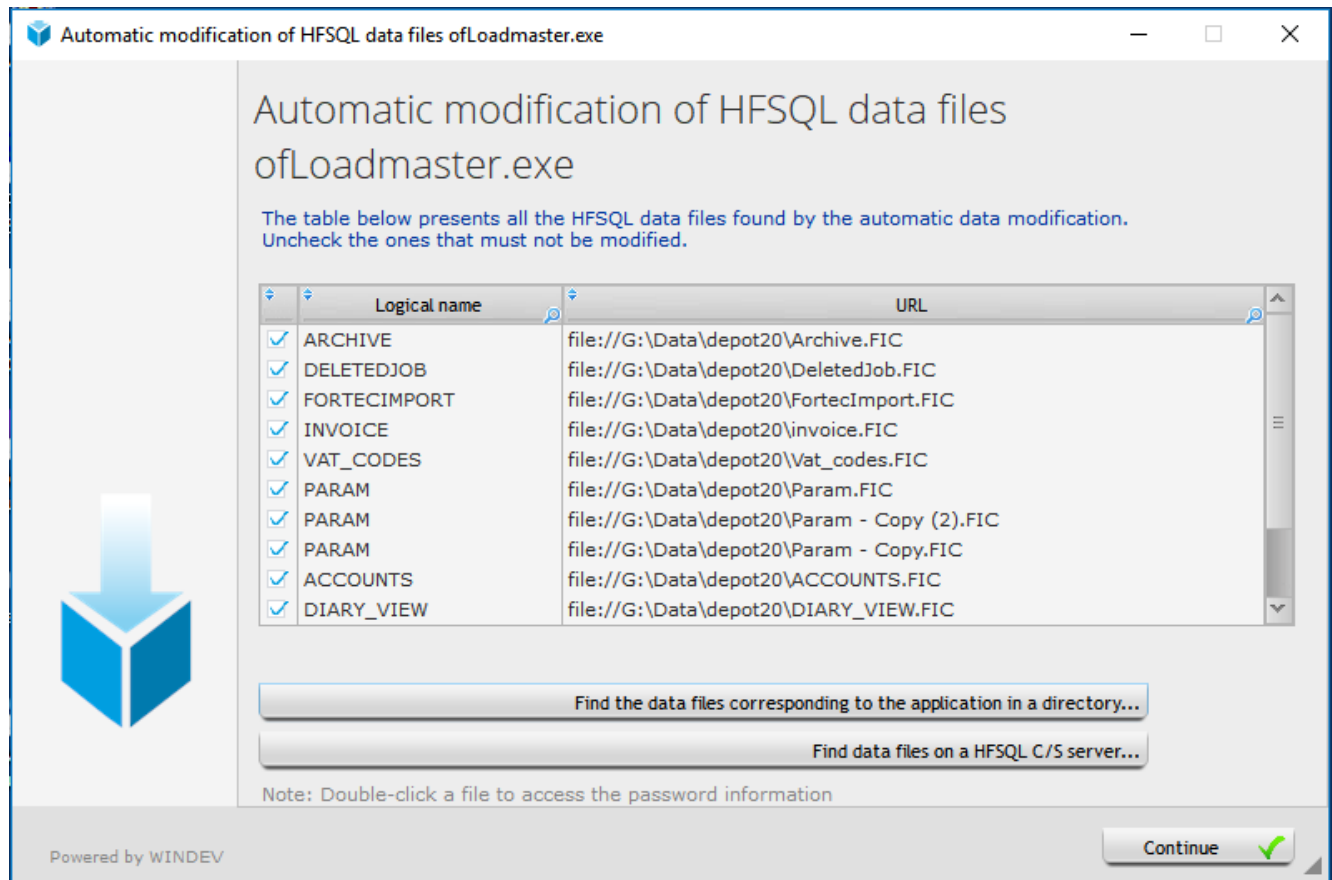
Choose the option of 'Find the data files corresponding to the application in a directory'.

Select the location where your main data files reside and OK.

Note this normally appears in the bottom left of the Loadmaster program.



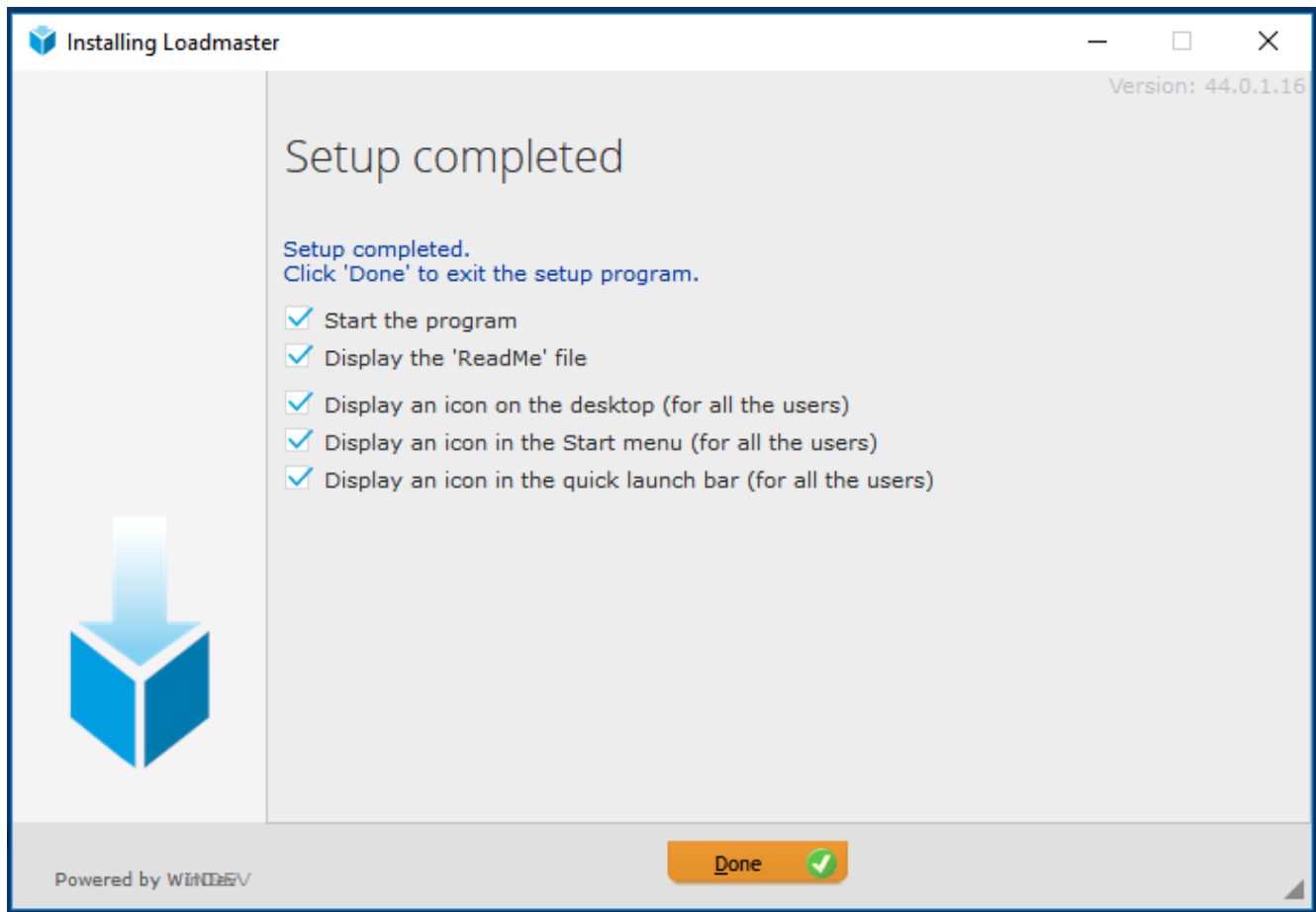
It will check if any files need updating and will advise you what they are.



Just click on the Continue button.

Note that when you have done this on the first computer then you can use the Quick setup on any other computers.

At the end you will get this screen.



## Notes

If you accidentally set the data directory to the wrong one or it becomes inaccessible then you can browse to this folder -

C:\ProgramData\ZipZap Computers\Loadmaster

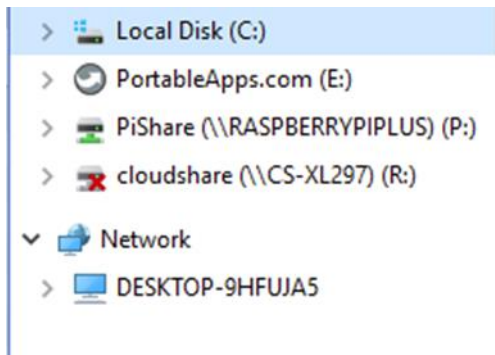
Delete the file LOCAL.DAT

This will then default the data folder back to C:\ProgramData\ZipZap Computers\Loadmaster and you can then go into Utilities and Data Directory to reset it.

---

If you have a problem with a mapped drive when you start the program then go into Windows Explorer and see if there is a red cross on that drive.

Here R: is disconnected.



Try to force the connection by double-clicking on it. Once connected run Loadmaster. This is a Windows issue.

### After installation check

Go into Setup then Local Parameters. Ensure this has completed entries in it and is not blank.

If it is blank then :-

Copy the four files that start with LOCAL from

C:\ProgramData\Zipzap Computers\Loadmaster

To

C:\ProgramData\Zipzap Computers Limited\Loadmaster

These are -

Local\_Parameters.fic

Local\_Parameters.mmo

Local\_Parameters.ndx

Local.dat

Note that ProgramData is a hidden folder and you may need to go into My Computer (This Computer on some versions) then Local Disk C: and then onto the View tab. Go into Options and Change Folder and Search options. Click on the View tab. Put a tick in Show Hidden files, folders and drives then OK.